

Community State  
Types

Nugent Score

pH

pH

4.0–4.5

4.6–5.0

5.1–5.5

> 5.5

Nugent Score

0–3

4–6

7–10

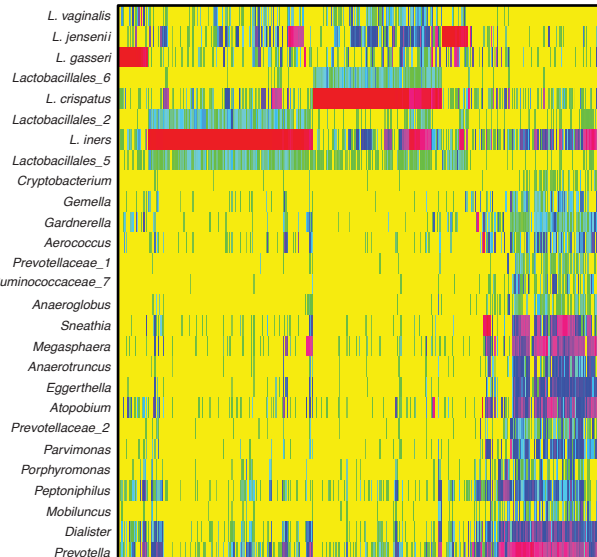
B.

Nugent score  
correlations  
pH correlations

Taxon clusters

Nugent/pH Correlations Score

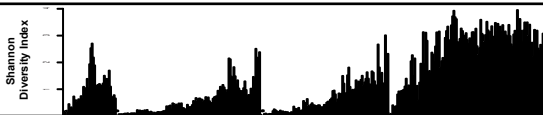
-0.6 -0.4 -0.2 0 0.2 0.4 0.6 0.8



D.

C.

E.



Taxon log<sub>10</sub> % abundance

-4 -3 -2 -1 0