



1

---



---



---



---



---



---



---




---



---



---



## THE PHILIPPINE TOPOGRAPHICAL FEATURES

- The Philippine Topography: Landforms and Water forms
- Basic Topographic Characteristics of the Philippines

\*Property of STI

G0041

2

---



---



---



---



---



---



---



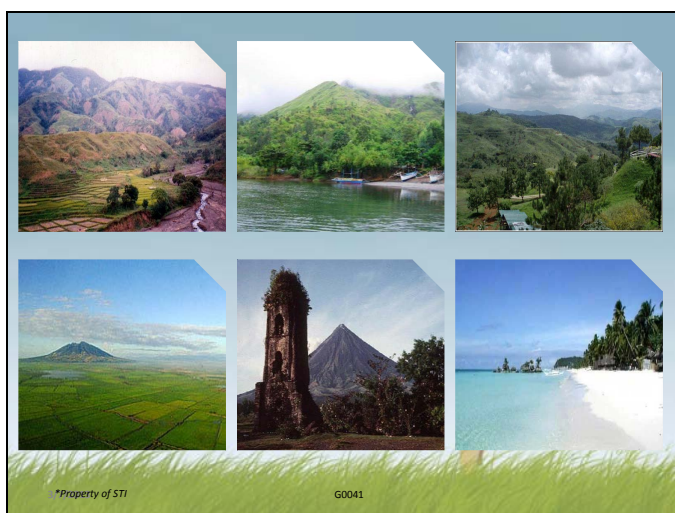
---



---



---



3

---



---



---



---



---



---



---



---



---



---

## TOPOGRAPHY

It refers to the science of characterizing the surface of a particular place/area. This involves the *landforms* and *water forms* of a country.

\*Property of STI

G0041

4

---



---



---



---



---



---



---



---



---



---

## LANDFORMS

These refer to the natural physical features of the Earth's surface. Popular landforms in the Philippines include mountains, mountain ranges, volcanoes, plains, plateaus, and valleys.



\*Property of STI

G0041

5 \_\_\_\_\_

\_\_\_\_\_

\_\_\_\_\_

\_\_\_\_\_

\_\_\_\_\_

\_\_\_\_\_

\_\_\_\_\_

\_\_\_\_\_

## WATER FORMS

These refer to the bodies of water. Popular water forms in the Philippines include river, springs, lakes, falls, seas, gulfs, and bays.



\*Property of STI

G0041

6 \_\_\_\_\_

\_\_\_\_\_

\_\_\_\_\_

\_\_\_\_\_

\_\_\_\_\_

\_\_\_\_\_

\_\_\_\_\_

\_\_\_\_\_

## EXAMPLES OF LAND FORMS

- ☐ **Mountain** – a huge landform that is elevated in a certain area
  - Mt. Isarog (Camarines Sur), Mt. Makiling (Laguna), Mt. Samat (Bataan), Mt. Apo (between Davao City and Davao del Sur)
- ☐ **Hill** – a landform that is lower and less steep than a mountain
  - Himontagon Hills and Chocolate Hills (Bohol)



\*Property of STI

G0041

7 \_\_\_\_\_

\_\_\_\_\_

\_\_\_\_\_

\_\_\_\_\_

\_\_\_\_\_

\_\_\_\_\_

\_\_\_\_\_

\_\_\_\_\_

## EXAMPLES OF LAND FORMS

- ☐ **Mountain Range** – a single mass of land that is composed of numerous mountains
  - Caraballo del Sur, Sierra Madre, Caraballo del Baler
- ☐ **Volcano** – a landform that serves as the passage point of the Earth's magma
  - Mayon (Albay), Iraya (Batanes Islands), Taal (Batangas), Hibok-Hibok (Camiguin Island), Pinatubo (Pampanga)



\*Property of STI

G0041

8 \_\_\_\_\_

\_\_\_\_\_

\_\_\_\_\_

\_\_\_\_\_

\_\_\_\_\_

\_\_\_\_\_

\_\_\_\_\_

\_\_\_\_\_

## EXAMPLES OF LAND FORMS

- ❑ **Plains** – flat landform and often thought of as grasslands and forests
  - Central Luzon Plain and Agusan Davao Plain
- ❑ **Plateau** – can be characterized as an elevated plain
  - Lanao Plateau and Tiruray Tableland in Maguindanao



\*Property of STI

G0041

## EXAMPLES OF LAND FORMS

- ❑ **Valley** – a lowland in the middle of any type of highlands such as mountain ranges and hills
  - Cagayan Valley, Cotabato Valley, Marikina Valley



\*Property of STI

G0041

9 \_\_\_\_\_

\_\_\_\_\_

\_\_\_\_\_

\_\_\_\_\_

\_\_\_\_\_

\_\_\_\_\_

\_\_\_\_\_

\_\_\_\_\_

10 \_\_\_\_\_

\_\_\_\_\_

\_\_\_\_\_

\_\_\_\_\_

\_\_\_\_\_

\_\_\_\_\_

\_\_\_\_\_

\_\_\_\_\_

## EXAMPLES OF WATER FORMS

- ❑ **River** – a body of water that has freshwater flowing in it
  - Rio Grande de Cagayan, Agno River, Abra River, Pampanga River, Rio Grande de Mindanao
- ❑ **Spring** – a body of water in which it comes from the Earth's underground
  - Tiwi Hot Spring (Albay), Los Baños, Pansol, and Bumbungan Hot Springs (Laguna), Pandi and Sibul Hot Springs (Bulacan)



\*Property of STI

G0041

## EXAMPLES OF WATER FORMS

- ❑ **Lake** – a body of water that is surrounded by land
  - Lake Dagatan (Quezon), Laguna de Bay (Laguna), Lake Lanao (Lanao del Sur), Lake Taal (Batangas)
- ❑ **Fall** – a body of water that comes from a highland (such as mountain)
  - Pagsanjan and Botocan Falls (Laguna), Hinulugang Taktak (Rizal), Tamaraw Falls (Oriental Mindoro)



\*Property of STI

G0041

11 \_\_\_\_\_

\_\_\_\_\_

\_\_\_\_\_

\_\_\_\_\_

\_\_\_\_\_

\_\_\_\_\_

\_\_\_\_\_

\_\_\_\_\_

12 \_\_\_\_\_

\_\_\_\_\_

\_\_\_\_\_

\_\_\_\_\_

\_\_\_\_\_

\_\_\_\_\_

\_\_\_\_\_

\_\_\_\_\_

## EXAMPLES OF WATER FORMS

- ☐ **Sea/Ocean** – a large body of salt water
  - Philippine Sea and Sulu Sea
- ☐ **Gulf** – a huge bay that is a part of a sea/ocean
  - Albay Gulf, Lagonoy Gulf, Leyte Gulf, Lingayen Gulf, Moro Gulf, Panay Gulf
- ☐ **Bay** – a body of water that is surrounded by land
  - Manila Bay, Baler Bay, Butuan Bay, Batangas Bay

\*Property of STI

G0041

## BASIC TOPOGRAPHIC CHARACTERISTICS

- ☐ Has about 7,107 islands.
- ☐ Has rocky and uneven islands with mountains running from north to south and located near the coastline.
- ☐ Has an extensive coastline that measures 34,600 kilometers which is twice longer than the United States.

\*Property of STI

G0041

13

14

## BASIC TOPOGRAPHIC CHARACTERISTICS

- ☐ Has rivers and streams that serve as highways for transportation and irrigation for agricultural fields.
- ☐ Has numerous lakes and waterfalls which may be used in industrial purposes.
- ☐ Has active, dormant, and extinct volcanoes which have been greatly affecting people's lives.

\*Property of STI

G0041

## BASIC TOPOGRAPHIC CHARACTERISTICS

- ☐ Has beautiful and precious coral reefs located beneath the edges of islands and islets.
- ☐ Has a wide expanse of territorial waters used for fishing and other agricultural activities and in tourism.

\*Property of STI

G0041

15

16